



MONTHLY MEMBERSHIP PROGRESS REPORT

District 322C3

Results as of: 09/30/2018

GMT: SWADESH RANJAN SAHA

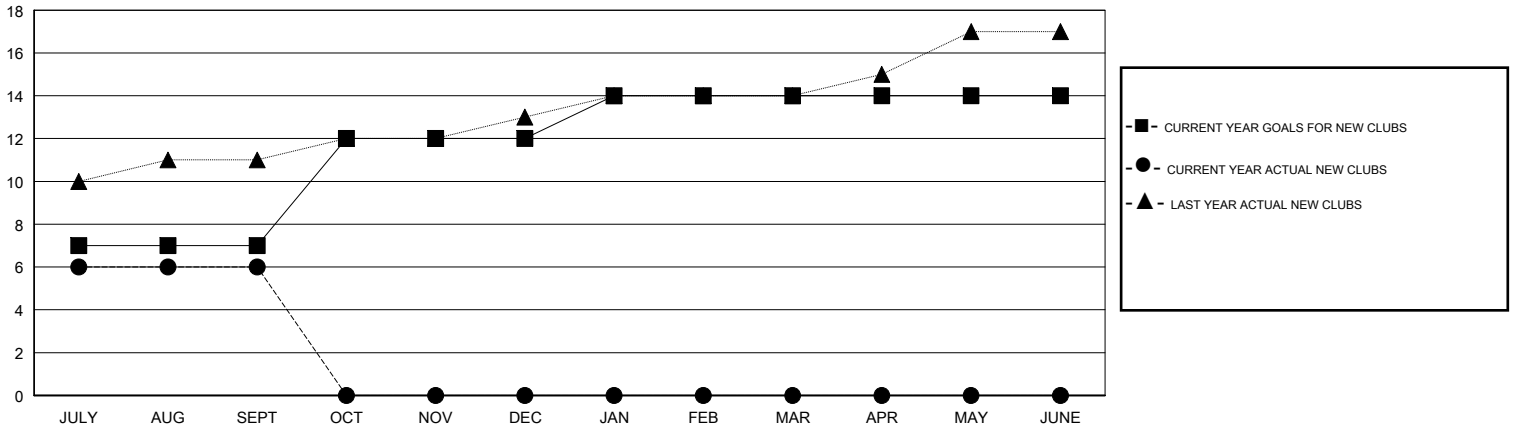
LOCATION INDIA

GMT CA

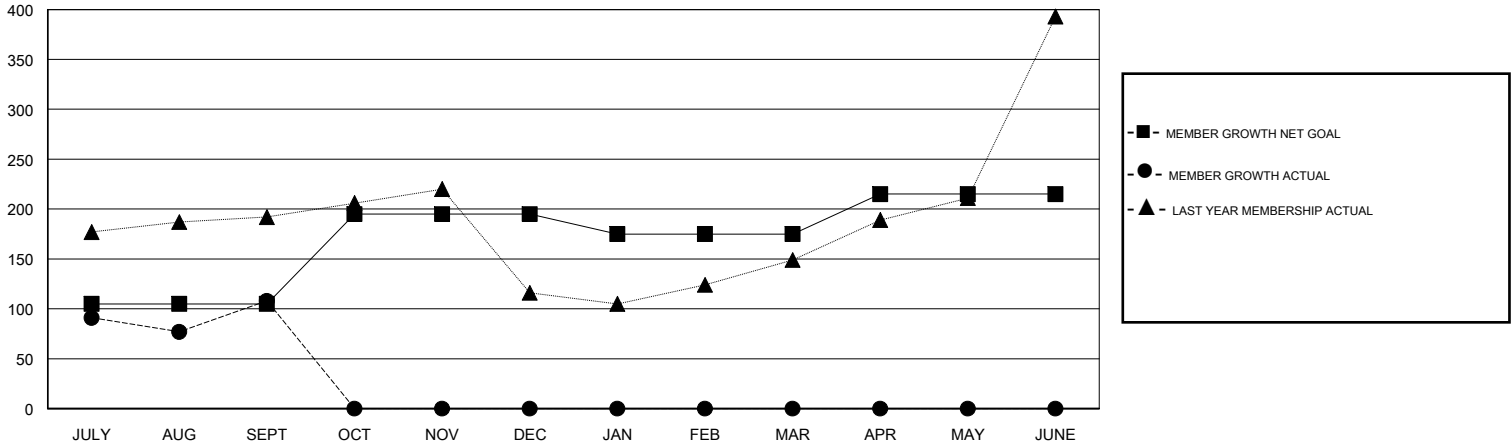
Clubs			
RESULTS FOR 2018-2019			
QUARTER	NEW CLUB GOAL	NEW CLUBS	DROPPED CLUBS
JULY/AUG/SEPT	7	6	2
OCT/NOV/DEC	5	0	0
JAN/FEB/MAR	2	0	0
APR/MAY/JUNE	0	0	0

Members			
RESULTS FOR 2018-2019			
QUARTER	MEMBER GROWTH NET GOAL	MEMBER GROWTH ACTUAL	DROPPED MEMBERS ACTUAL (including transfers)
JULY/AUG/SEPT	105	250	132
OCT/NOV/DEC	90	0	0
JAN/FEB/MAR	-20	0	0
APR/MAY/JUNE	40	0	0

GOALS AND ACTUAL NEW CLUBS CUMULATIVE



GOALS AND ACTUAL MEMBERS CUMULATIVE



DROPPED CLUBS: 2

30 CLUBS OF 114 ADDED 1 OR MORE NEW MEMBERS

GENDER DISTRIBUTION	
MALE	2,923 (73.59%)
FEMALE	1,049 (26.41%)
Women Percentage Fiscal Year Goal: 26%	

DROPPED MEMBERS	
DECEASED	8
CLUB CANCELLED	39
OTHER	85
TOTAL	132

[CLICK HERE FOR CUMULATIVE MEMBERSHIP DATA](#)

TOTAL FAMILY UNIT MEMBERS	2,650
FAMILY MEMBERS PAYING HALF DUES	1,658